



**Transformative Logistics and  
Profitability Solutions**



# Revolutionize Your Logistics, Enhance Your Profitability

Strategies for Recovery, Growth, and  
Sustainability

**BEIG INVEST**  
LOGISTICS AND PRIVATE COURIERS

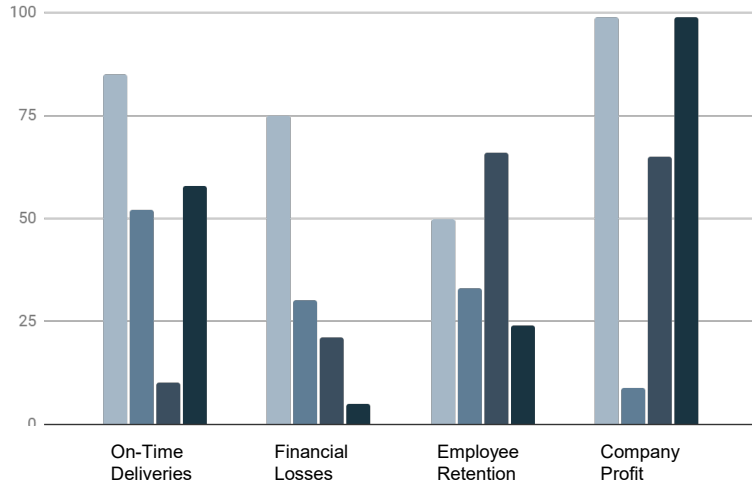




## Introduction

Greetings! Today, we present a comprehensive solution to enhance your company's logistics, recover lost revenue, and skyrocket profitability.

# Initial Analysis Offer



**Get a 1-day analytical report of your operations. Identify pain points affecting on-time deliveries, employee retention, and financial losses.**

Gain valuable insights into the heart of your operations with our 1-day analytical report. Our seasoned experts will meticulously examine every facet of your business, meticulously dissecting processes to uncover crucial information. This in-depth analysis aims to pinpoint and illuminate the pain points within your operations that might be impeding your success.

We delve into the intricacies of on-time deliveries, scrutinizing the current system to identify bottlenecks and areas for improvement. Employee retention, a cornerstone of a thriving workforce, is meticulously examined to understand factors influencing turnover. Additionally, our financial experts conduct a thorough examination to uncover any lurking losses and inefficiencies, providing a comprehensive overview of your financial landscape.

This one-day snapshot will serve as the foundation for a tailored strategy, ensuring that the solutions we propose are not only effective but precisely targeted to address your specific challenges. Let us illuminate the path to enhanced efficiency, employee satisfaction, and financial resilience within your organization.

# Contracted Solutions

We offer contracted solutions for 90 days. Our experts analyze, strategize, and implement changes to optimize efficiency.



# Contracted Solutions

## Comprehensive Analysis

Our journey begins with an in-depth analysis of your current operations. Our experts meticulously scrutinize every aspect, identifying inefficiencies, bottlenecks, and areas for improvement. Through thorough data examination and on-site evaluations, we gain a profound understanding of your unique challenges.

## Strategic Planning

Armed with insights from the analysis, our team formulates a tailored strategic plan designed to optimize efficiency. This comprehensive roadmap outlines specific actions to be taken, key milestones, and measurable objectives. We prioritize solutions that align with your business goals, ensuring a strategic approach to the next 90 days.

## Implementation of Solutions

With the strategic plan in place, our experts swing into action, implementing the proposed changes. This phase involves collaborative efforts with your existing team, ensuring a seamless transition. From adjusting processes to introducing innovative technologies, every change is carefully executed with the aim of enhancing overall operational efficiency.

## Continuous Monitoring and Adaptation

Our commitment extends beyond implementation. We continuously monitor the impact of the changes, closely tracking key performance indicators. Regular check-ins and progress assessments ensure that the strategies remain effective. If needed, we adapt our approach to address emerging challenges, guaranteeing sustained improvements throughout the 90-day contract period.

# Team Integration - Collaborative Synergy

In this pivotal phase, we foster a collaborative environment where your existing team seamlessly merges with our strategy execution unit. Rather than an external imposition, we view your team as integral contributors to the success of our shared objectives. Here's how we ensure a harmonious integration:

## Shared Objectives and Values:

**Alignment:** We initiate the integration process by aligning our shared objectives and values. Understanding the essence of your company culture, we ensure that our strategies complement and enhance your existing strengths.

## Clear Communication Channels:

**Transparency:** Open lines of communication are established to encourage transparent dialogue between our experts and your team members. This ensures everyone is on the same page, fostering trust and cooperation.

## Collaborative Decision-Making:

**Inclusive Approach:** Decision-making becomes a collaborative effort, leveraging the expertise of both our specialists and your team. By fostering an inclusive approach, we ensure that every perspective is considered, enriching the overall strategy execution.

## Knowledge Transfer and Skill Enhancement:

**Empowerment:** We recognize the value of your team's existing skills. Our integration strategy includes knowledge transfer sessions, empowering your team with the tools and insights needed to actively contribute to the success of the implemented strategies.

## Seamless Transition:

**Adaptability:** Our approach is adaptive, recognizing the need for a seamless transition. By respecting the existing workflow and integrating our strategies incrementally, we minimize disruptions and ensure a smooth transformation.

# Training Program

**BEIG INVEST**  
LOGISTICS AND PRIVATE COURIERS







## Training Approach

A 10-day intensive training program ensures alignment with your company's values, and mission, and instills crucial skills for efficient logistics and management. Over a 10-day training period, we engage in thorough discussions about fees and requirements, collaboratively establishing profitability goals. During this time, our role extends beyond traditional training—we act as temporary Organization Managers, specializing in streamlining the intricate aspects of Warehousing and Logistics Management. Our focus is on optimizing operations and enhancing overall efficiency.

# Training Program - Building Expertise and Alignment

## Values and Mission Immersion

**Deep Dive:** Our training begins with a deep dive into your company's core values and mission. Through workshops, presentations, and interactive sessions, we cultivate a comprehensive understanding among our team members.

## Role and Responsibility Clarity

**Clear Definitions:** Each team member gains a clear understanding of their designated role and responsibilities within the logistics and management framework. This ensures everyone is aware of their individual contributions to the overarching strategy.

## Skill Development Workshops

**Targeted Sessions:** We conduct targeted workshops focused on developing skills crucial for logistics and management. This includes time management, critical thinking, organizational management, and effective communication.

## Cultural Assimilation

**Company Culture Integration:** Company Culture Integration: We go beyond professional skills, focusing on cultural assimilation. Team members not only understand the operational aspects but also become ingrained in the ethos of your company, fostering a sense of belonging.

## Practical Simulations

**Real-World Scenarios:** The training program incorporates real-world simulations, allowing our team to navigate through scenarios that mirror the challenges and dynamics of your specific industry. This hands-on experience enhances their problem-solving capabilities.

## Performance Expectations

**Clear Metrics:** Performance expectations are clearly outlined. Metrics for success are established, allowing each team member to gauge their progress and contribution during the training period.

By the end of this intensive training program, our team members not only acquire the necessary skills for efficient logistics and management but also become integral parts of the organizational culture. This immersive approach ensures that, beyond expertise, our team embodies the spirit and values that define your company. The result is a cohesive unit ready to implement strategies with precision and dedication.



# Culture of Excellence



## Cultural Impact

We foster a culture of excellence. Every employee is trained as a manager, promoting self-management and accountability.

# Fostering **Individual Empowerment** and **Collective Accountability**

In our commitment to cultivating a culture of excellence, we recognize that organizational success hinges on the empowerment and accountability of every individual within the team. Here's how we instill and nurture this transformative culture:

## **Managerial Training for All**

**Equal Opportunity:** Our approach is egalitarian; every employee, irrespective of their role, undergoes managerial training. This not only expands their skill set but also imparts a holistic understanding of the organization's functions.

## **Promoting Self-Management**

**Autonomy:** We believe in the power of autonomy. Through training, we encourage self-management, empowering employees to take charge of their responsibilities and make decisions that contribute to the overall success of the organization.

## **Cultivating Accountability**

**Individual Ownership:** A cornerstone of our culture is individual accountability. Each team member takes ownership of their tasks and responsibilities, understanding how their contributions directly impact the collective goals and success of the organization.

## **Leadership Mindset**

**Mind Shift:** Our training goes beyond imparting skills; it instills a leadership mindset. Every employee, regardless of their position, is nurtured to think and act like a leader, fostering a sense of responsibility and proactivity.

# Fostering **Individual Empowerment** and **Collective Accountability**

By fostering a culture where every employee is not just a team member but a manager in their own right, we create an environment that breeds innovation, accountability, and a collective pursuit of excellence. This cultural impact becomes the driving force behind the successful implementation of strategies and the sustained growth of your organization.

## **Continuous Improvement**

**Feedback Mechanism:** A culture of excellence thrives on continuous improvement. We establish feedback mechanisms that allow employees to assess their performance, receive constructive feedback, and proactively work towards refining their skills and contributions.

## **Collaborative Environment**

**Team Synergy:** Excellence is not achieved in isolation. We encourage a collaborative environment where individuals contribute their unique strengths, fostering synergy that elevates the collective performance of the team.

## **Recognition of Contributions**

**Appreciation:** Recognizing and appreciating individual and collective contributions is vital. Our culture emphasizes acknowledgment for a job well done, reinforcing the idea that every effort is crucial to the organization's success.

## **Alignment with Company Values**

**Value Integration:** The culture of excellence is not a standalone entity; it aligns seamlessly with your company's core values. This integration ensures that the cultural shift complements and reinforces your organizational ethos.



**Performance  
Evaluation**



# Performance Metrics

Employees are evaluated on time management, communication, and job proficiency. We build a culture of excellence.





## Extended Services

Extend our services based on performance.  
Allow our staff to work for you for a year  
before considering permanent hires.

# Extended Services - A Gradual and Measured Partnership Approach

## Performance-Based Extension

**Mutual Success:** We believe in mutual success. The extension of our services is intricately tied to the performance metrics and success indicators established during the initial contract period. As we meet and exceed these benchmarks, the partnership naturally extends.

## Year-Long Trial Period

**Strategic Observation:** We recommend a year-long trial period during which our staff continues to work closely with your team. This extended duration allows for strategic observation and ensures that the positive impact witnessed during the initial 90 days is consistent and sustainable.

## Strategic Evaluation

**Comprehensive Assessment:** Before considering an extension, we conduct a comprehensive evaluation of the impact our strategies have had on your operations. This includes analyzing key performance indicators, employee feedback, and overall organizational improvements.

## Permanent Hiring Consideration

**Informed Decision:** Only after this extended period do we suggest considering permanent hires. This deliberate approach ensures that both parties have had ample time to assess compatibility, performance, and the long-term viability of the partnership.

## Gradual Integration of Our Staff

**Measured Transition:** Should the partnership extend, we propose a gradual integration of our staff into your permanent workforce. This measured approach allows for a seamless transition, ensuring that the skills, culture, and expertise cultivated during the initial contract period are seamlessly embedded within your organization.

## Feedback-Driven Improvements

**Continuous Enhancement:** Throughout this extended partnership, we maintain an open line of communication, actively seeking feedback and making necessary adjustments. This feedback-driven approach ensures that our services continually evolve to meet the changing dynamics of your business.



# Competitive Compensation

We offer competitive compensation and exclusive contracts. Our screening process ensures dedicated commitment.

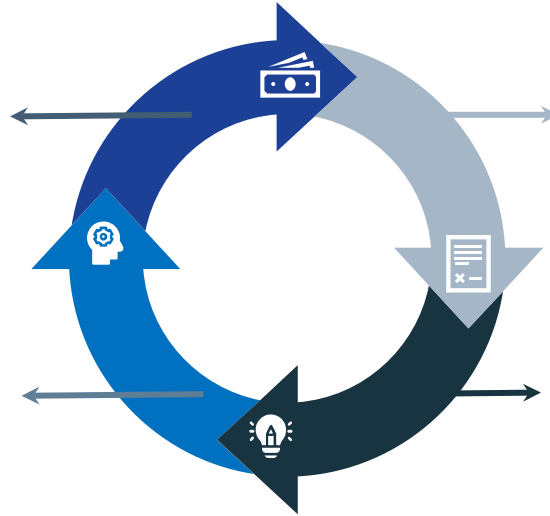
# Competitive Compensation - Key Points

## Competitive Compensation

**Market-Aligned Packages:** Our compensation packages are designed to be competitive, ensuring that our experts are remunerated in alignment with industry standards and the value they bring to your organization.

## Transparent and Fair Practices

**Ethical Compensation:** Our compensation practices are transparent and fair, aligning with ethical standards. This ensures a collaborative and trusting relationship where both parties are confident in the value exchange, laying the foundation for a successful partnership.



## Exclusive Contracts

**Dedicated Commitment:** Through exclusive contracts, we secure a dedicated commitment from our experts. This exclusivity fosters a strong sense of allegiance, ensuring that their focus is solely directed toward the successful execution of strategies within your organization.

## Screening Process

**Quality Assurance:** Our rigorous screening process is a testament to our commitment to quality. By meticulously vetting candidates, we guarantee that only the most qualified and dedicated professionals become integral members of the team working on your project.

# Our Expertise

Our expertise lies in optimizing various facets of your business operations. We specialize in enhancing deliveries and logistical structures, providing comprehensive employee training and management solutions. By strategically incorporating new contracted staff, we ensure a dynamic and efficient workforce. Our approach involves a holistic examination of your infrastructure, identifying areas where financial outflows occur. Our goal is to not only bring these resources back in but also to establish sustainable mechanisms that keep your financial flow consistently efficient.



## Proven Track Record

With over 25 years of experience, we've achieved an average ROI of 32% for our clients. Your success is our next milestone.

**BEIG INVEST**  
LOGISTICS AND PRIVATE COURIERS





## Decades of Excellence

Our team brings over 25 years of profound expertise in the Resolution Specialist Industry, having successfully guided 14 private clients to achieve an outstanding average profit increase of 32%. Your organization is poised to be our next success story in terms of Return on Investment (ROI), organizational transformation, streamlined freight logistics, acquisition of top-tier staff, unwavering dependability, and positive change—these pillars encapsulate the essence of what we stand for.



# In-House Resources

Our unique advantage lies in our in-house resources, including carriers and brokerage services. This strategic approach not only guarantees cost savings on freight movement but also transforms what would traditionally be considered expenses into revenue-generating opportunities.





# Customized Opportunities

Our solutions are adaptable and customizable to fit your evolving business model. We scale where you're losing and create strategies for sustained profitability.

# Revolutionizing **Logistics Profit**



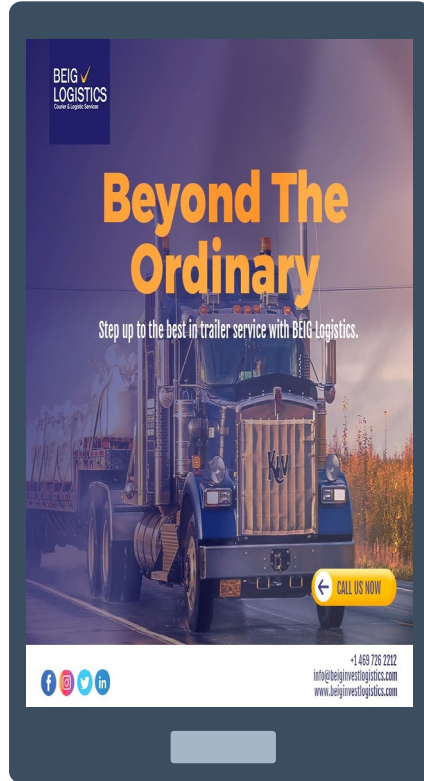
Our dynamic relationships are catalysts for our customers' prosperity. With in-house carriers and brokerage services, we not only secure substantial cost savings for our clients but also introduce a unique revenue model.



**Picture this:** your clients pay for the freight they move, and you, as the orchestrator of deliveries, now earn a percentage of each load. It's a paradigm shift where you're not just facilitating logistics; you're transforming it into a lucrative revenue stream. Cheers to unlocking new dimensions of success!

**Let's embark on this transformative journey together. Your support, your managers' support, and your high-valued staff will make this a resounding success.**

Contact us to embark on a mutually beneficial journey.



**BEIG INVEST**  
LOGISTICS AND PRIVATE COURIERS

Let us talk. **It's**  
**Free!**

For further inquiries, contact Tiffany B Scott at (469) 726-2212. Let's elevate your logistics and profitability!

[www.beiguniverse.com/beig-logistics](http://www.beiguniverse.com/beig-logistics)